



TEST REPORT

Applicant : KOLON PLASTICS, INC.
Address : 1018, Ungmyung-dong, Gimcheon-city,
Gyeongbuk, 740-180 Korea

Page: 1 of 4

Report No. RT09R-U1114-002-E

Date: Jun. 10, 2009

Sample Description : The following submitted sample(s) said to be:-

Name/Type of Product : KOCETAL
Name of Material : POM
Sample ID No. : RT09R-U1114-002
Item No. : EL302, EL303, EL304, EL306
Manufacturer/Vender : KOLON PLASTICS, INC.

Sample received : Jun. 05, 2009
Testing Date : Jun. 05, 2009 ~ Jun. 10, 2009
Testing Laboratory : Intertek Testing Center
Testing Environment : Temperature : (24 ± 2) °C, Humidity : (60 ± 5) % R.H.

Test Method(s) : Please see the following page(s).
Test Result(s) : Please see the following page(s).

* Note 1 : The test results presented in this report relate only to the object tested.

* Note 2 : This report shall not be reproduced except in full without the written approval of the testing laboratory.

* Note 3 : The item no. is assigned by client and indicated according to their requirement and guarantee letter.

Approved by,

E.Y.Lee / Lab. Technical Manager

Authorized by,

H.W.Yoo / Lab. General Manager

This Test Report is issued by the Company subject to its Terms and Conditions of Business printed overleaf. Attention is drawn to the limitations of liability, indemnification and jurisdictional issues defined therein. This Test Report shall not be reproduced, except in full, without prior written consent of the Company.

Intertek Testing Center



TEST REPORT

Page: 2 of 4
Date: Jun. 10, 2009

Report No. RT09R-U1114-002-E

Sample ID No. : RT09R-U1114-002

Sample Description : KOCETAL

Test Items	Unit	Test Method	MDL	Results
Cadmium (Cd)	mg/kg	With reference to US EPA 3052, by acid digestion and determined by ICP-OES	0.5	N.D.
Lead (Pb)	mg/kg	With reference to US EPA 3052, by acid digestion and determined by ICP-OES	5	N.D.
Mercury (Hg)	mg/kg	With reference to US EPA 3052, by acid digestion and determined by ICP-OES	2	N.D.
Hexavalent Chromium (Cr ⁶⁺)	mg/kg	With reference to US EPA 3060A and determined by UV-VIS Spectrophotometer	1	N.D.
Polybrominated Biphenyl (PBBs)				
Monobromobiphenyl	mg/kg	With reference to US EPA 3540C, by solvent extraction and determined by GC/MS	5	N.D.
Dibromobiphenyl	mg/kg		5	N.D.
Tribromobiphenyl	mg/kg		5	N.D.
Tetrabromobiphenyl	mg/kg		5	N.D.
Pentabromobiphenyl	mg/kg		5	N.D.
Hexabromobiphenyl	mg/kg		5	N.D.
Heptabromobiphenyl	mg/kg		5	N.D.
Octabromobiphenyl	mg/kg		5	N.D.
Nonabromobiphenyl	mg/kg		5	N.D.
Decabromobiphenyl	mg/kg		5	N.D.
Polybrominated Diphenyl Ether (PBDEs)				
Monobromodiphenyl ether	mg/kg	With reference to US EPA 3540C, by solvent extraction and determined by GC/MS	5	N.D.
Dibromodiphenyl ether	mg/kg		5	N.D.
Tribromodiphenyl ether	mg/kg		5	N.D.
Tetrabromodiphenyl ether	mg/kg		5	N.D.
Pentabromodiphenyl ether	mg/kg		5	N.D.
Hexabromodiphenyl ether	mg/kg		5	N.D.
Heptabromodiphenyl ether	mg/kg		5	N.D.
Octabromodiphenyl ether	mg/kg		5	N.D.
Nonabromodiphenyl ether	mg/kg		5	N.D.
Decabromodiphenyl ether	mg/kg		5	N.D.

Tested by : YK Cho, HJ Kim, WH Park

Notes : mg/kg = ppm = parts per million
 < = Less than
 N.D. = Not detected (<MDL)
 MDL = Method detection limit

This Test Report is issued by the Company subject to its Terms and Conditions of Business printed overleaf. Attention is drawn to the limitations of liability, indemnification and jurisdictional issues defined therein. This Test Report shall not be reproduced, except in full, without prior written consent of the Company.

Intertek Testing Center



TEST REPORT

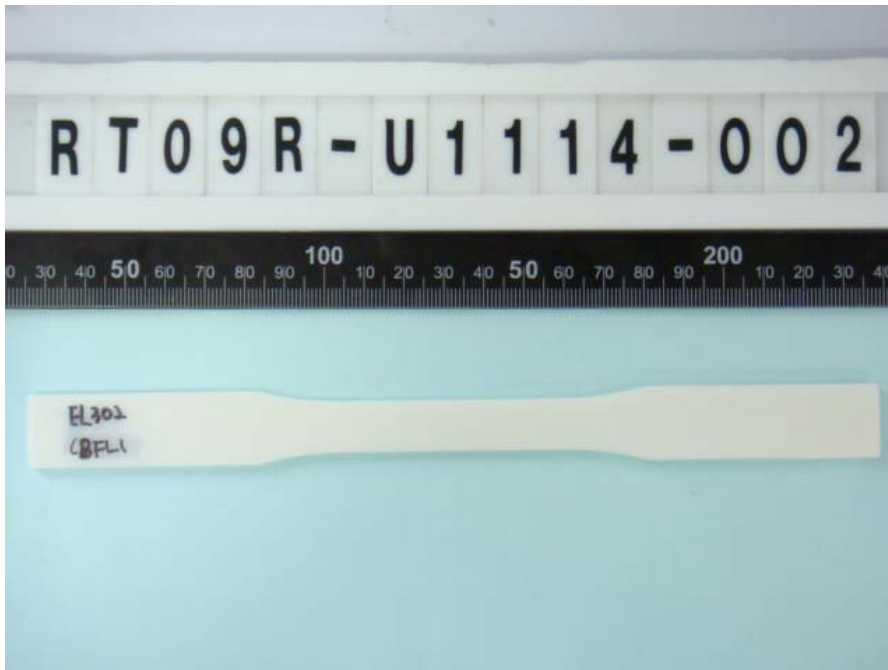
Page: 3 of 4
Date: Jun. 10, 2009

Report No. RT09R-U1114-002-E

Sample ID No. : RT09R-U1114-002

Sample Description : KOCETAL

* View of sample as received;-



This Test Report is issued by the Company subject to its Terms and Conditions of Business printed overleaf. Attention is drawn to the limitations of liability, indemnification and jurisdictional issues defined therein. This Test Report shall not be reproduced, except in full, without prior written consent of the Company.

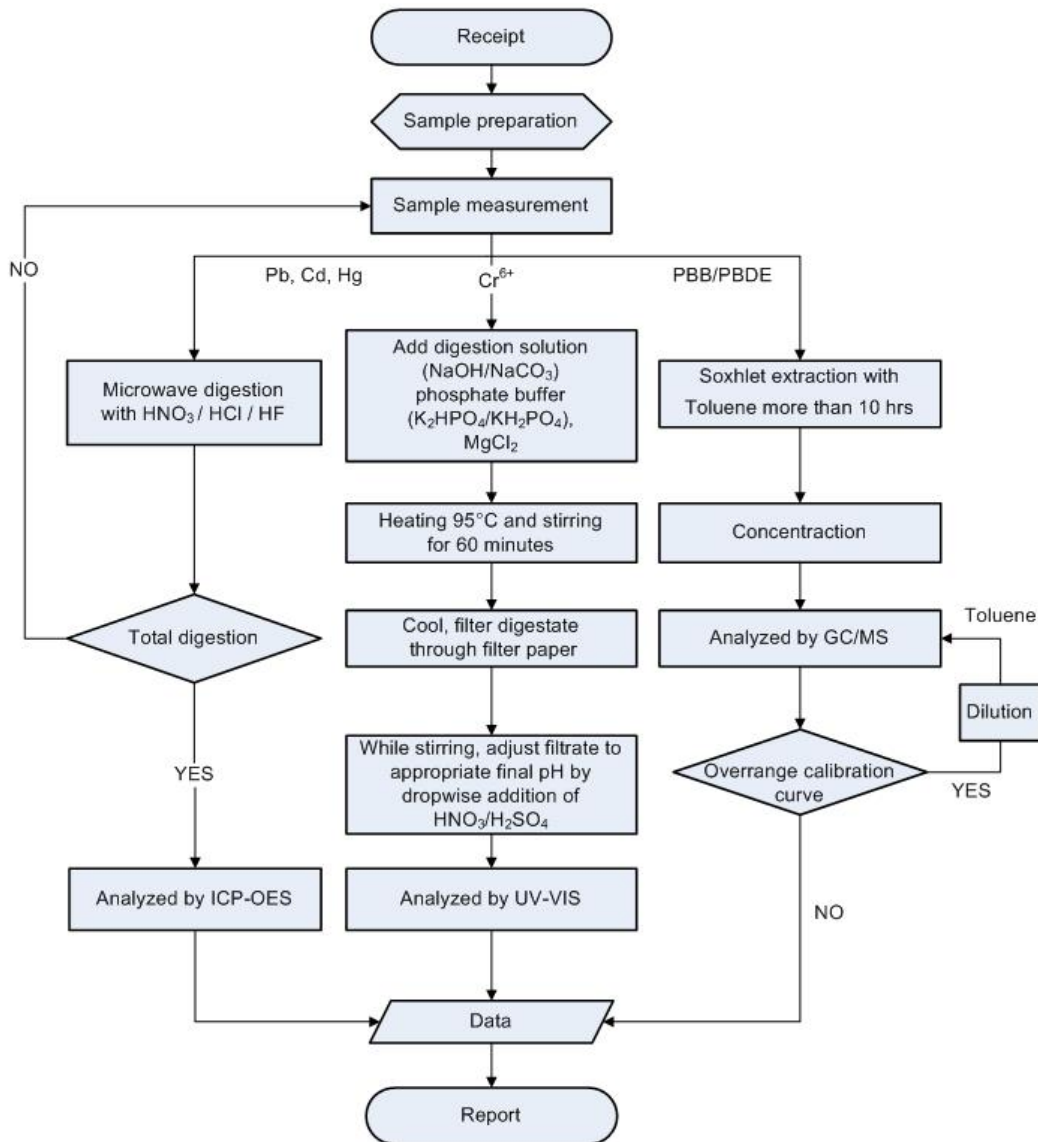
Intertek Testing Center

Seoul Office : Tel : 02-2109-1250 Fax : 02-2109-1259 Gumi Office : Tel : 054-462-7647 Fax : 054-462-7657 Web Site : www.intertek.co.kr
Seoul Lab. : #709, 7Fl, Ace Techno Tower V, 197-22, Guro-3Dong, Guro-Gu, Seoul 152-766 Korea Tel : 02-2109-1260 Fax : 02-2109-1258
Ulsan Lab. : #340-2, Yongam-Ri, Chongryang-Myun, Ulju-Gun, Ulsan 689-865 Korea Tel : 052-257-6754 Fax : 052-276-6792

TEST REPORT

Report No. RT09R-U1114-002-E
Sample ID No. : RT09R-U1114-002
Sample Description : KOCETAL

Flow Chart
(EPA 3052 for Cd, Pb, Hg / EPA 3060A for Cr⁶⁺ / EPA 3540C for PBB/PBDE)



** Remarks : The samples were dissolved totally by pre-conditioning method according to above flow chart.

***** End of Report *****

This Test Report is issued by the Company subject to its Terms and Conditions of Business printed overleaf. Attention is drawn to the limitations of liability, indemnification and jurisdictional issues defined therein. This Test Report shall not be reproduced, except in full, without prior written consent of the Company.

Intertek Testing Center